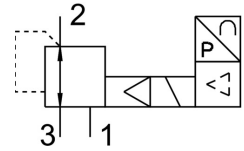


Proportional pressure control valve VPPE-3-1-1/8-2-420-E1

FESTO

Part number: 557774



Data sheet

Feature	Value
Nominal width pressurization	5 mm
Exhaust nominal width	2.5 mm
Type code	VPPE
Actuation type	Electrical
Sealing principle	Soft
Mounting position	Any Preferably upright
Structural design	Pilot-controlled diaphragm regulator
Short-circuit protection	For all electrical connections
Safety instructions	VPPE safety position: if the supply cable breaks, the outlet pressure is maintained in uncontrolled form.
Symbol	00995303
Reverse polarity protection	for all electrical connections
Reset method	Mechanical spring
Type of control	Pilot-controlled
Valve function	3-way proportional pressure control valve
Display type	LED display 3-digit
Pressure regulation range MPa	0.002 MPa ... 0.2 MPa
Pressure regulation range	0.02 bar ... 2 bar
Inlet pressure 1	3 bar ... 4 bar
Inlet pressure 1 MPa	0.3 MPa ... 0.4 MPa
Max. pressure hysteresis	0.002 MPa
Max. pressure hysteresis	0.02 bar
Standard nominal flow rate	310 l/min
DC operating voltage range	21.6 V ... 26.4 V
Max. current consumption	160 mA
Duty cycle	100%
Max. electrical power consumption	4.2 W
Residual ripple	10 %
Switching output	PNP
Analog output signal range	4 - 20 mA
Analog input signal range	4 - 20 mA
Operating medium	Compressed air as per ISO 8573-1:2010 [7:4:4] Inert gas
Information on operating and pilot media	Operation with oil lubrication not possible

Feature	Value
Certification	RCM compliance mark c UL us - Listed (OL)
KC characters	KC EMC
CE marking (see declaration of conformity)	As per EU EMC directive
Corrosion resistance class (CRC)	2 - Moderate corrosion stress
LABS conformity	VDMA24364-B2-L
Temperature of medium	10 °C ... 50 °C
Degree of protection	IP65
Ambient temperature	0 °C ... 60 °C
Product weight	390 g
Linearity	1 %FS
Hysteresis	1 %FS
Reproducibility	0.5 %FS
Overall accuracy	1.5 %FS
Temperature coefficient	0.04 %/K
Electrical connection	5-pin M12 Plug
Type of mounting	With through-hole
Pneumatic connection 1	G1/8
Pneumatic connection 2	G1/8
Pneumatic connection 3	G1/8
Note on materials	Free of copper and PTFE RoHS-compliant
Housing material	Wrought aluminum alloy Anodized